



 **BRADY**

# BBP12

Electrical, Voice- and  
Datacom Identification

**LABEL PRINTER**



## BBP12 Label printer

The BBP12 Label Printer is an entry level benchtop label printer for cable, component, product and laboratory sample identification that offers great value for money. The **compact** BBP12 offers a high print speed of **101.6 mm/second** and can handle a **wide range** of highly durable and specialised Brady **identification labels**.

### Simple, efficient design

- Compact in size, fits on every desk
- Default Ethernet Connectivity, allowing you to work in a network
- Connect any universal keyboard via USB 2.0 to work in stand-alone mode
- Full colour LCD Display and intuitive software interface are simple to use, so no extensive training is required
- Simple calibration menu with easy 1-2-3 step printing
- Best price/quality in the market for low volume printing
- Comes with a free unwinder accessory to print larger label rolls

### Performance

- Prints a wide range of identification labels from 10 mm up to 112 mm wide
- Standard 300 dpi print quality allowing accurate image & barcode positioning on small labels
- With its powerful 32 bit processor and its extended memory it can print up to 101.6 mm / sec
- The printer supports the industry-standard Zebra® and Eltron® programming languages
- Print time and date on to your labels via the "Real time clock feature"

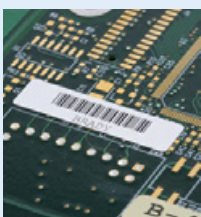


25.40 mm small core materials designed specifically for the BBP12 Label Printer.  
Unwinder included for larger quantity bulk 76 mm core rolls.



While the BBP12 label printer primarily uses 25.40 mm core materials for low to medium volume printing, an unwinder is available should high volume printing be needed.

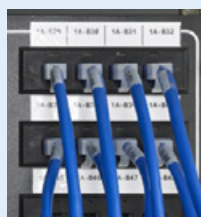
### Versatile labelling options



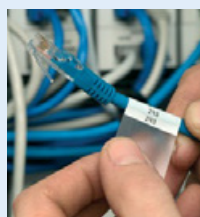
Circuit board labels



Asset tracking labels



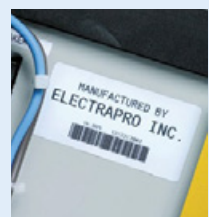
Voice & data communications



Wire marker labels & sleeves



General purpose labels



...And more!



## Printer specifications

The Brady BBP12 label printer is a compact, reliable, affordable entry level thermal transfer benchtop printer. Ideal for customers requiring low volume printing on lots of different materials within the electrical, voice and datacom, LAB and specialised electronics markets. It allows you to print labels, tapes, cable markers, sleeves and much more. This printer comes with a free Brady WorkStation Basic Design Software Suite, enabling you to immediately start designing professional labels.

<b>Application</b>	Asset tracking Barcode labelling Laboratory labelling Wire and cable labelling
<b>Recommended Throughput Operational Hours</b>	8 hours/5 days
<b>Recommended Usage per Day</b>	1000
<b>Software Compatibility</b>	Brady Workstation Windows based driver for 3rd party software use
<b>Colour Capability</b>	Monocolour
<b>Connectivity</b>	Ethernet Serial USB
<b>Cutter</b>	None
<b>Hardware Options</b>	Cleaning swabs, Cutter (factory installed option), External media holder, Peel & Present, Universal keyboard
<b>Flash Memory</b>	128 MB Flash, 64 MB SDRAM, SD Flash memory card up to 32 GB
<b>Max Print Width</b>	105.41 mm
<b>Stand-alone Printing (Detached from PC)</b>	Peripheral
<b>Print Speed (mm/sec)</b>	101.60
<b>Print Technology</b>	Thermal Transfer
<b>Materials Supported</b>	Direct Thermal Paper, FreezerBondz™ Polyester, Heat-shrink Polyolefin, Metallised Polyester, Metallised Polyester with Polyester Overlamine, Nylon Cloth, Paper, Polyester, Polyester with Polyester Overlamine, Polyimide, Polyolefin, Polypropylene, Polyvinylfluoride, Repositionable Paper, Self-laminating Polyester, Self-laminating Vinyl, StainerBondz™ Polyester, Tamper-resistant Metallised Vinyl, Tamper-resistant Vinyl, Vinyl, Vinyl Cloth, Water-indicating Polyester/Paper Laminate
<b>Bar Code Capability</b>	China Post, Codabar, Code 11, Code 128A, Code 128B, Code 128C, Code 128UCC, Code 39, Code 39 with check digit, Code 49, Code 93, Deutsche Post Identcode, Deutsche Post Leitcode, EAN-13, EAN-8, GS1 DataBar, GS1 DataBar Stacked Omnidirectional, GS1-128, Interleaved 2 of 5, Interleaved 2 of 5 with check digit, ITF-14, MSI, MSI with check digit, PLANET, Plessey, POSTNET, Telepen, UPC-A, UPC-E
<b>Approval/Compliance</b>	UL, cUL, CE, RoHS, EAC
<b>Dimensions</b>	202.95 mm (W) x 190.50 mm (H) x 259.33 mm (D)
<b>Weight (kg)</b>	2.3

## Accessory

Article No.	Order Reference	Description
361061	BBP12/BBP11-C	Cutter
361064	BBP12/BBP11-PLnPR	Peel and Present
361065	BBP12/BBP11-U	External Material Holder (Unwinder) for BBP12 and BBP11
622201	Blank Ribbon Core - 12.70 mm diam	BBP12 and BBP11 blank ribbon core

## BBP12 printer part numbers

Article No.	Order Reference	Description
198588	BBP12-DATA Kit-EU	BBP12 Label printer 300 dpi - Datacom Kit - EU + BWS Suite
198589	BBP12-DATA Kit-UK	BBP12 Label printer 300 dpi - Datacom Kit - UK + BWS Suite
198590	BBP12-DATA Kit-US	BBP12 Label printer 300 dpi - Datacom Kit - US + BWS Suite
198591	BBP12-ELEC Kit-EU	BBP12 Label printer 300 dpi - Electrical Kit - EU + BWS Suite
198592	BBP12-ELEC Kit-UK	BBP12 Label printer 300 dpi - Electrical Kit - UK + BWS Suite
198593	BBP12-ELEC Kit-US	BBP12 Label printer 300 dpi - Electrical Kit - US + BWS Suite
322908	BBP12-EU-U-C-BWS	BBP12 Label printer 300 dpi - EU with Cutter, Unwinder and Brady Workstation Suite
195966	BBP12-EU-U-CUTTER	BBP12 Label printer 300 dpi - EU with Cutter and Unwinder
195566	BBP12-EU-UNWINDER	BBP12 Label printer 300 dpi - EU with Unwinder
198596	BBP12-LAB Kit-EU	BBP12 Label printer 300 dpi - Laboratory Kit - EU + BWS Suite
198597	BBP12-LAB Kit-UK	BBP12 Label printer 300 dpi - Laboratory Kit - UK + BWS Suite
198598	BBP12-LAB Kit-US	BBP12 Label printer 300 dpi - Laboratory Kit - US + BWS Suite
302670	BBP12-SPS-EU	BBP12 Label printer 300 dpi - EU with Unwinder, Barcode Reader and Brady Workstation Scan & Print Suite
302671	BBP12-SPS-UK	BBP12 Label printer 300 dpi - UK with Unwinder, Barcode Reader and Brady Workstation Scan & Print Suite
322906	BBP12-UK-U-BWS	BBP12 Label printer 300 dpi - UK with Unwinder and Brady Workstation Suite
322909	BBP12-UK-U-C-BWS	BBP12 Label printer 300 dpi - UK with Cutter, Unwinder and Brady Workstation Suite
195967	BBP12-UK-U-CUTTER	BBP12 Label printer 300 dpi - UK with Cutter and Unwinder
195567	BBP12-UK-UNWINDER	BBP12 Label printer 300 dpi - UK with Unwinder
322907	BBP12-US-U-BWS	BBP12 Label printer 300 dpi - US with Unwinder and Brady Workstation Suite
322910	BBP12-US-U-C-BWS	BBP12 Label printer 300 dpi - US with Cutter, Unwinder and Brady Workstation Suite
195968	BBP12-US-U-CUTTER	BBP12 Label printer 300 dpi - US with Cutter and Unwinder
195568	BBP12-US-UNWINDER	BBP12 Label printer 300 dpi - US with Unwinder



The Basic Suite is included with every printer, all you need to do is download it. [Workstation.BradylD.com/Free](http://Workstation.BradylD.com/Free)



Quickly identify your products and wires with customised text or graphical labels, using serialised or imported data.

[Workstation.BradylD.com/ProductandWire](http://Workstation.BradylD.com/ProductandWire)



Easily identify any sample with the most wanted laboratory sample label design apps in our Brady Workstation Lab suite.

[Workstation.BradylD.com/lab](http://Workstation.BradylD.com/lab)





# ALTEC

INDUSTRIAL IDENTIFICATION

**ALTEC industrial identification N.V.**

Zone Cargovil B60  
Erasmuslaan 11  
1804 Eppegem – Cargovil

02 270 34 88  
[info@altec.be](mailto:info@altec.be)  
[www.altec.be](http://www.altec.be)